



**15 Hilder Road Ermington NSW**

3 2 1

Nestled serenely within its surroundings, this impeccably maintained full-brick home rests on a near-level parcel of land, boasting an expansive street frontage. The interiors are tastefully finished, seamlessly blending with the outdoor entertaining areas, creating a perfect harmony between indoor and outdoor living. Ideally located near a wealth of lifestyle amenities, this home offers a prime opportunity for those seeking both convenience and future growth.

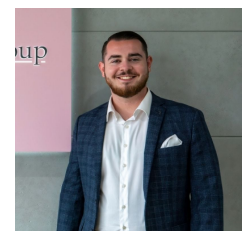
**Type** : House  
**Price** : \$ 1,920,000  
**Land Size** : 543.8 sqm  
**View** : <https://www.awardgroup.com.au/sale/nsw/parramatta/ermington/residential/house/8077473>

The ongoing Melrose Park urban redevelopment project, the Parramatta light rail expansion, and the \$10 million rejuvenation of George Kendall Riverside Park signal significant enhancements to the area. This makes 15 Hilder Road, Ermington, not just a home, but a strategic investment in a rapidly evolving community.

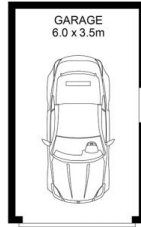
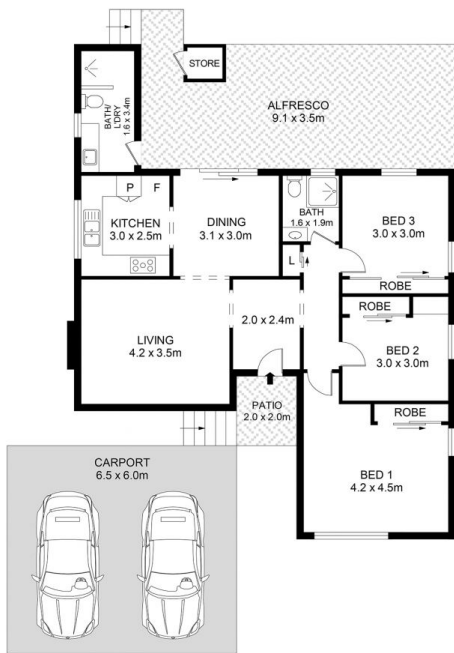
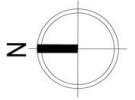
[For full version visit the website](#)



**David Johnson**  
(02) 9808 1199



**Lochlan McDermott**  
(02) 9808 1199



SITE PLAN  
(NOT TO SCALE)

## 15 Hilder Road, Ermington



### Disclaimer

Floor Plan measurements are approximate and are for illustrative purposes only. While we cannot doubt the floor plans accuracy, we make no guarantee, warranty or representation as to the accuracy and completeness of the floor plan

