

### 7/30-32 Meadow Crescent Meadowbank NSW

2 1 1

Offered to the market for lease for the very first time since undergoing a full renovation, this oversized full-brick two-bedroom unit is a property you'll love to call home! You are sure to be the envy of family & friends with close to 90sqm of internal living space, making it bigger than anything else you're likely to set your eyes on within the local area. Set within a short stroll of Meadowbank Train Station, Ferry Wharf, Village Plaza and Meadowbank Reserve, this is the one you've been looking for?

#### Property Highlights |

- The brand-new gourmet kitchen is feature-packed with stone benchtops, herringbone splashbacks, quality cooking appliances and an additional meals area with built-in sideboard
- Spacious living room upon entry that offers a seamless flow to the undercover entertainer's balcony via large glass

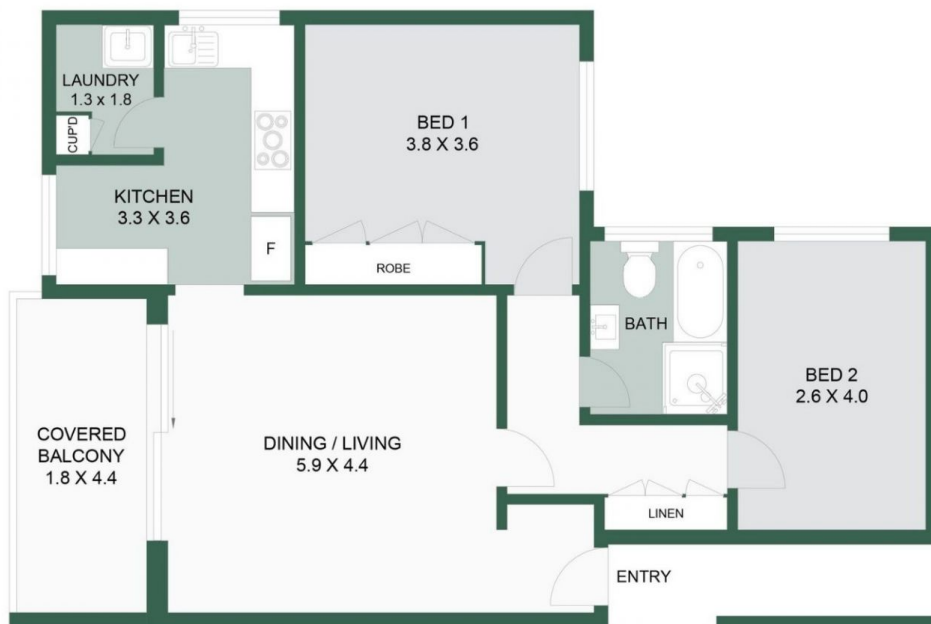
**View :** <https://www.awardgroup.com.au/lease/nsw/north-ern-suburbs/meadowbank/residential/unit/7848700>



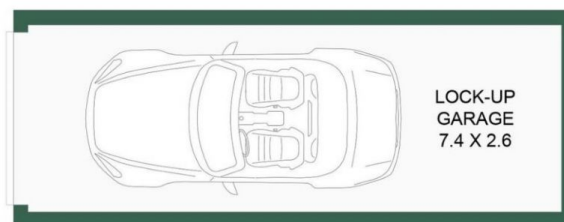
**Leighton Avery**  
(02) 9808 1199



**Shanay Yeo**  
(02) 9808 1199



LEVEL ONE



**AwardGroup**  
REAL ESTATE

**7/30-32 Meadow Crescent, Meadowbank**

Disclaimer | Floor plan measurements are approximate and are for illustrative and guide purposes only. While we cannot doubt the floor plan's accuracy, we make no guarantee, warranty, or representation as to the accuracy and completeness of the floor plan. Interested parties are to rely upon their own enquiries.