



20/2 Porter Street Ryde NSW

1 1 1

Ideally located on the Meadowbank border, this modern 1-bedroom apartment has been well-maintained and offers near new floating floorboards, LED lights, and paintwork. Featuring a versatile, bedroom-sized study you'll love the flexibility of being able to work from home or the short stroll to local bus, train, and ferry services.

Price : \$ 510,000

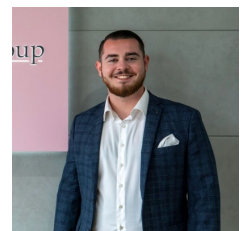
View : <https://www.awardgroup.com.au/sale/nsw/northern-suburbs/ryde/residential/unit/7846675>

Property Highlights |

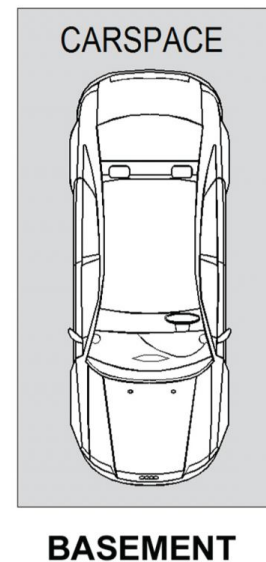
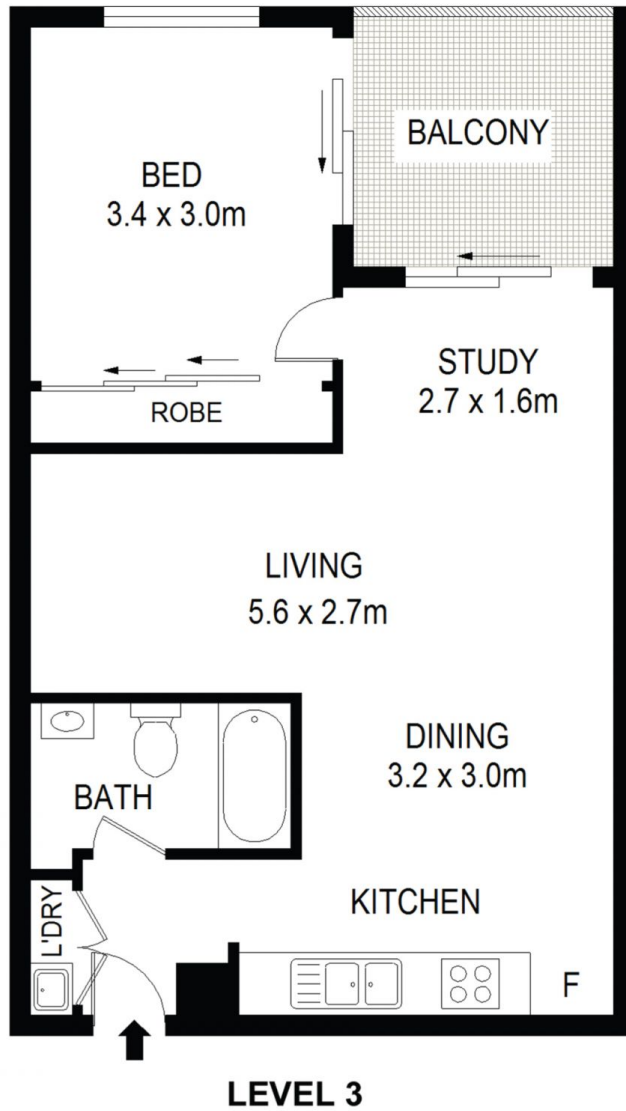
- Spacious East-facing bedroom with large built-in wardrobe and direct balcony access
- Galley-style kitchen complete with gas cooktop, dishwasher, and stone benchtops
- Well-proportioned living room
- Bedroom-sized study
- Modern bathroom with shower over bath
- Laundry cupboard
- Secure parking space



Leighton Avery
(02) 9808 1199



Lochlan McDermott
(02) 9808 1199



20/2 Porter Street Ryde

