



## 501/11 Porter Street Ryde NSW

2 2 1

Flooded with natural light, this oversized penthouse apartment offers the very best in modern living and offers a show-stopping terrace balcony, perfect for entertaining family & friends. Loaded with premium fixtures and fittings throughout, you'll love living within walking distance of the river foreshore, local shops, schools and public transport options including train, bus & ferry services.

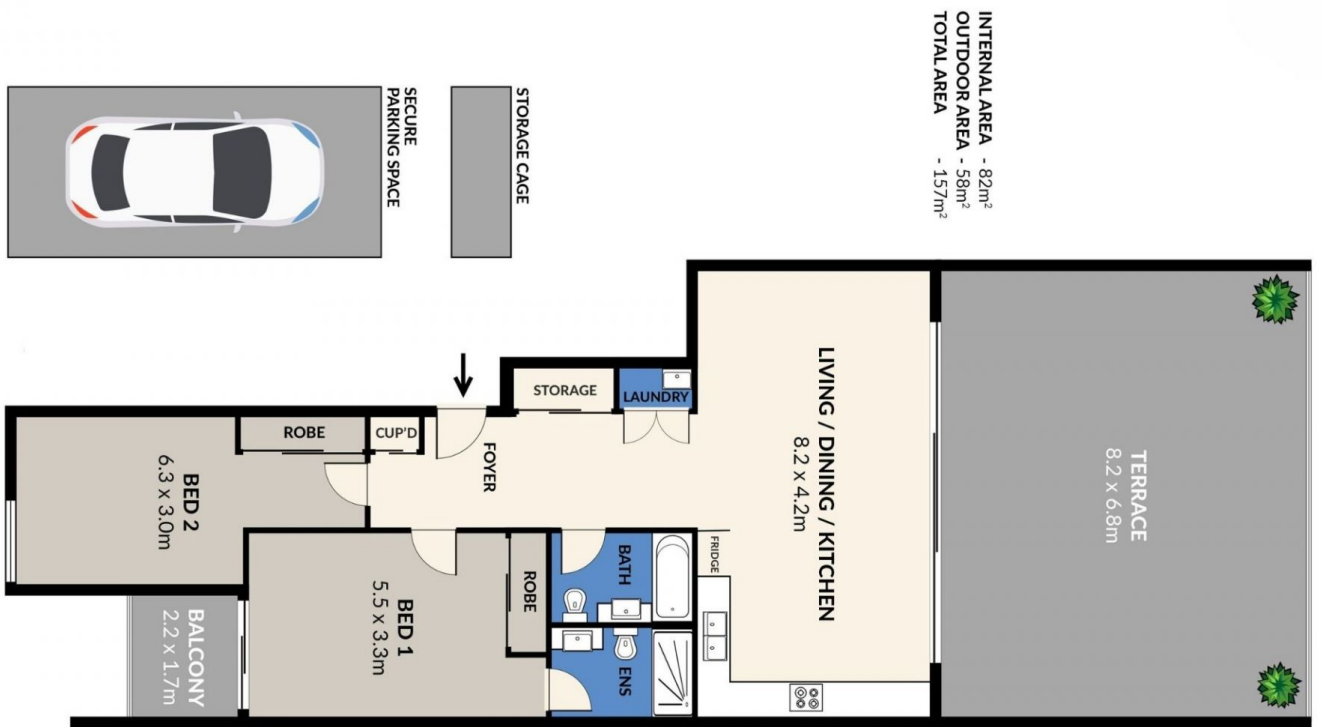
**View :** <https://www.awardgroup.com.au/lease/nsw/north-ern-suburbs/ryde/residential/apartment/7804808>

### Property Highlights |

- ? Designer kitchen with stone bench-tops featuring waterfall edging, a gas stove, dishwasher and low maintenance glass splash-backs
- ? Enormous entertainers' terrace with electric roller blinds and views out to Rhodes and Olympic Park
- ? Family bathroom with shower over bath
- ? Two well-proportioned bedrooms, both with built-in



**Rentals Team**  
(02) 9808 1199



**AwardGroup**  
REAL ESTATE

501/11 Porter Street, Ryde

Disclaimer | Floor plan measurements are approximate and are for illustrative and guide purposes only. While we cannot doubt the floor plan's accuracy, we make no guarantee, warranty, or representation as to the accuracy and completeness of the floor plan. Interested parties are to rely upon their own enquiries.