



15 Eileen Street Ryde NSW

4 2 2

Nestled in a peaceful yet ultra-convenient enclave of the sought-after Ryde precinct, this tastefully renovated family home is sprawled across a generous parcel in a family-friendly cul-de-sac and is only minutes from lifestyle amenities & transport options.

Land Size : 562.8 sqm
View : <https://www.awardgroup.com.au/sale/nsw/northern-suburbs/ryde/residential/house/7425012>

Property Highlights |

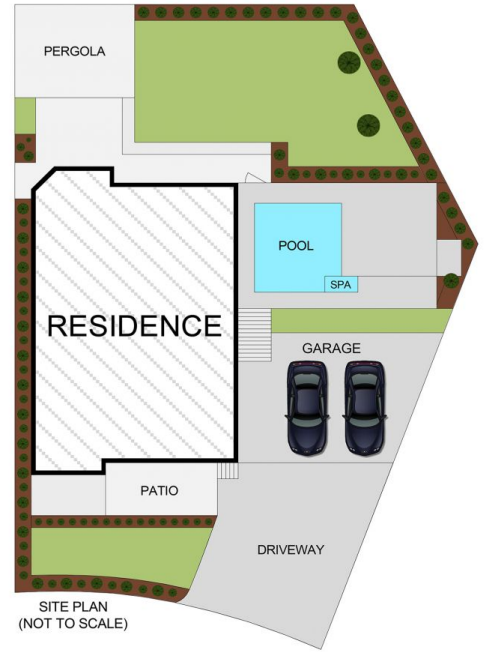
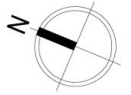
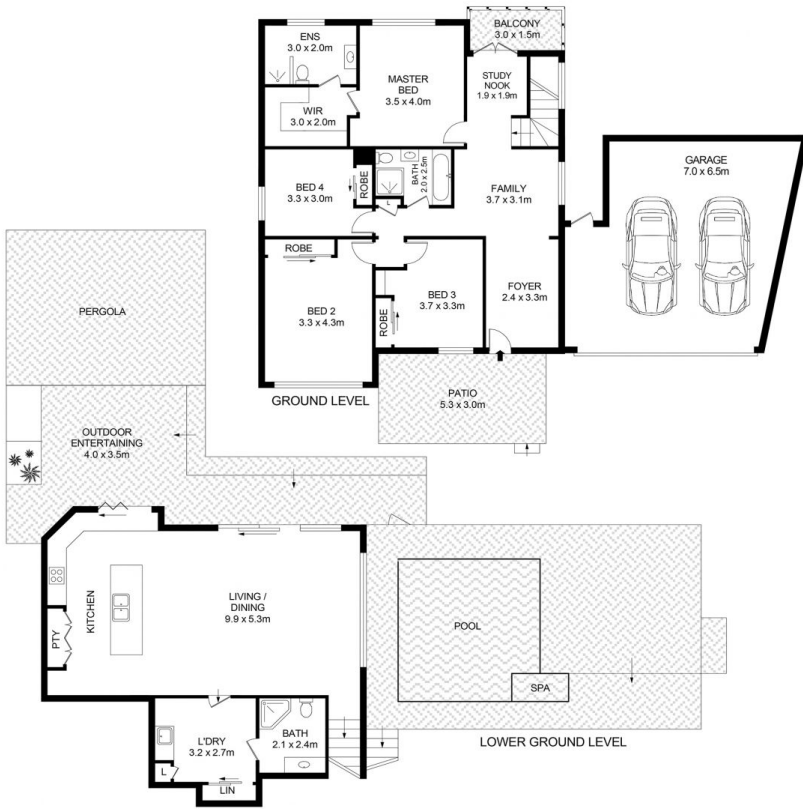
- Spacious open plan kitchen, living & dining space overlooking the child-friendly rear yard
- A flexible family layout for whatever your needs
- Contemporary family kitchen with gas cooking and stone benchtops that sprawl to outdoor entertaining
- Master bedroom with walk-in robe and ensuite bathroom
- Four well-proportioned bedrooms | built-in robes
- Alfresco entertainers deck with hardwood floorboards underfoot



David Johnson
(02) 9808 1199



Leighton Avery
(02) 9808 1199

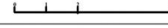


SITE PLAN (NOT TO SCALE)

15 Eileen Street, Ryde

Disclaimer

Floor Plan measurements are approximate and are for illustrative purposes only. While we cannot doubt the floor plans accuracy, we make no guarantee, warranty or representation as to the accuracy and completeness of the floor plan



AwardGroup
REAL ESTATE