

23 Gregory Street Ermington NSW

4 3 2

Exuding sophistication and ultra-contemporary finishes throughout, with an emphasis on resort-style living, this exceptional family residence showcases parkland vistas and a versatile floor plan with multiple living areas unfolding to an enticing outdoor entertaining space.

Nestled peacefully into its surroundings, in a blue-ribbon parkland setting, directly opposite George Kendall Riverside Park, amidst landscaped gardens, this thriving riverside locale offers a unique opportunity for large, extended or multigenerational families seeking plenty of accommodation and a relaxed, peaceful lifestyle.

Property Highlights |

- Well-zoned spaces and an open family layout are meticulously maintained to retain its as-new quality

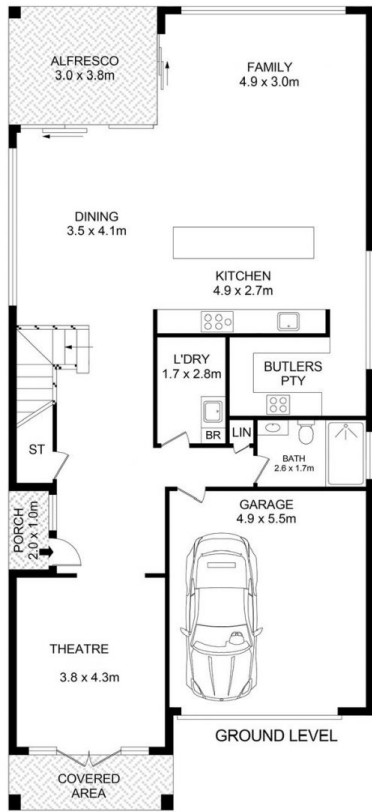
Price : \$ 2,780,000
Land Size : 518.5 sqm
View : <https://www.awardgroup.com.au/sale/nsw/parramatta/ermington/residential/house/7423026>



David Johnson
(02) 9808 1199



Leighton Avery
(02) 9808 1199



23 Gregory Street, Ermington

Disclaimer
 Floor Plan measurements are approximate and are for illustrative purposes only. While we cannot doubt the floor plans accuracy, we make no guarantee, warranty or representation as to the accuracy and completeness of the floor plan

