



2/20 Meadow Crescent Meadowbank NSW

2 1 1

Perfect for commuting professionals, young families or downsizers, this home is located in a well-established neighbourhood and provides both convenience and lifestyle at your doorstep.

Set within a short stroll of Meadowbank train station and ferry wharf, living at this address will make your daily commute a breeze, whilst also being surrounded by riverside walkways and open parkland reserve.

Property Highlights |

- Two bedrooms of accommodation | both complete with built-in wardrobes
- Combined lounge & dining room upon entry
- Air conditioning
- Sun-lit northern aspect over the balcony
- Resurfaced bathroom with shower over bath plus a

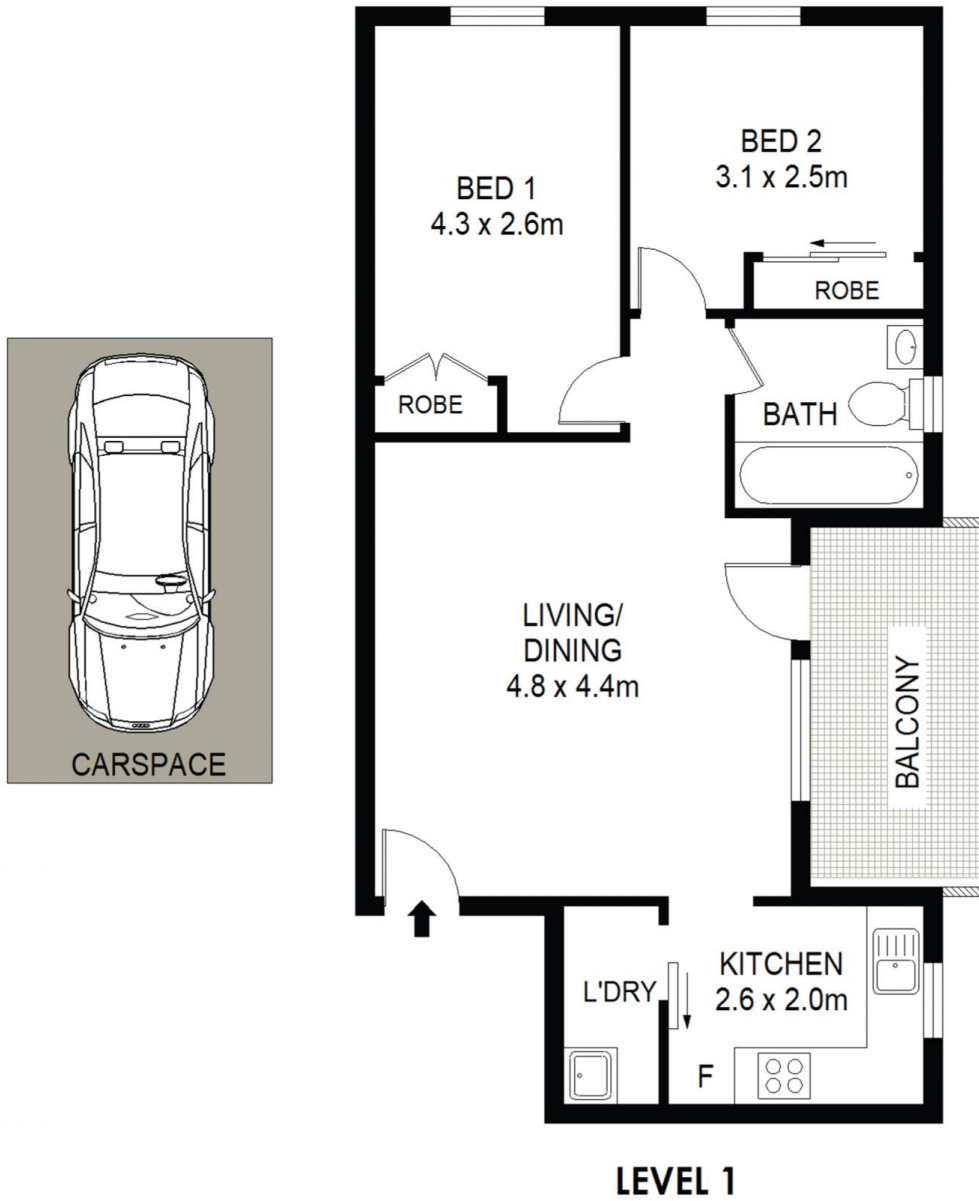
View : <https://www.awardgroup.com.au/sale/nsw/northern-suburbs/meadowbank/residential/unit/7418189>



Leighton Avery
(02) 9808 1199



David Johnson
(02) 9808 1199



2/20 Meadow Crescent Meadowbank

