

**11 Gregory Street Ermington NSW**

3 1 2

Secluded from the street by enchanting hedging, this endearing family home boasts the perfect blend of character & contemporary living. Nestled peacefully into its surrounds, with established gardens and charming exteriors, it showcases an idyllic natural setting for family living and convenience.

**Price** : \$ 1,718,880  
**Land Size** : 518.5 sqm  
**View** : <https://www.awardgroup.com.au/sale/nsw/parramatta/ermington/residential/house/7400983>

Property Highlights |

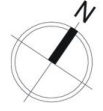
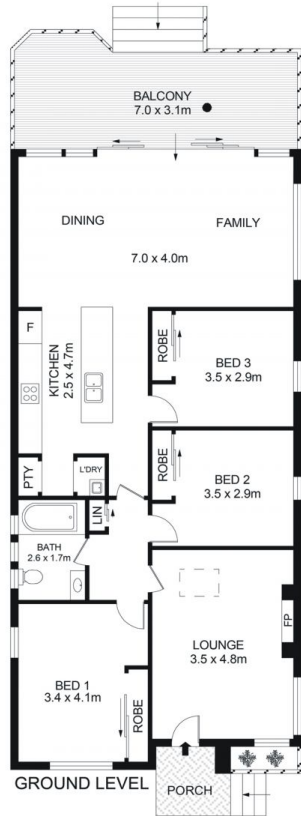
- A fluid sequence of living zones spilling out to entertaining and the lush rear yard
- Three bedrooms
- Open-plan kitchen with stone benchtops and stainless steel appliances
- Tastefully updated bathroom
- Bamboo floorboards underfoot
- Privately set with established gardens



**David Johnson**  
(02) 9808 1199



**Leighton Avery**  
(02) 9808 1199



## 11 Gregory Street, Ermington

### Disclaimer

Floor Plan measurements are approximate and are for illustrative purposes only. While we cannot doubt the floor plans accuracy, we make no guarantee, warranty or representation as to the accuracy and completeness of the floor plan



**AwardGroup**  
REAL ESTATE