



25/19-27 Adderton Road Telopea NSW

2 **1** **1**

Showcasing updated interiors, with a light-filled corner aspect, this two-bedroom unit presents style and convenience.

View : <https://www.awardgroup.com.au/lease/nsw/parra-matta/telopea/residential/unit/7211640>

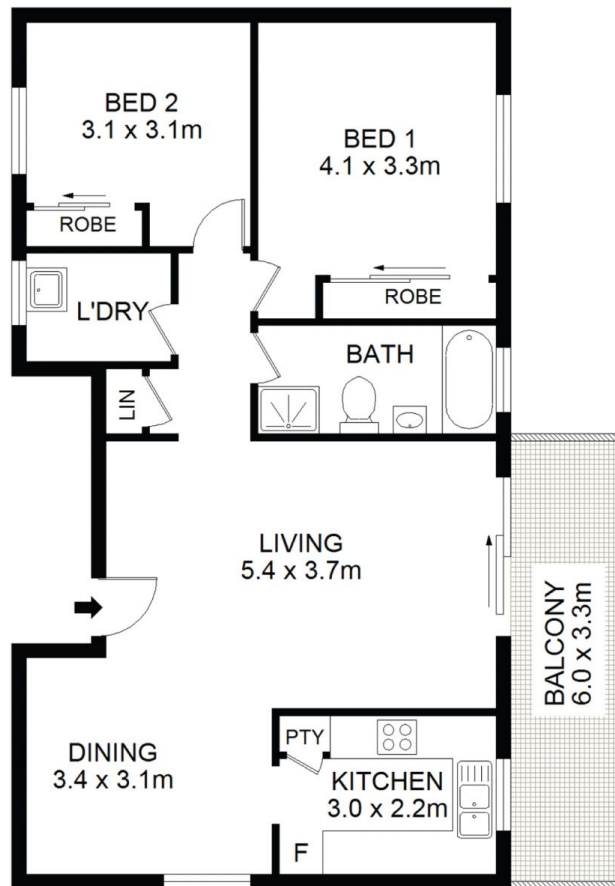
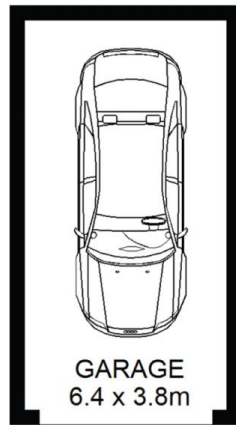
With a lock-up garage, this is a perfect opportunity for those looking for convenience with swift connections to the Parramatta and Sydney CBDs.



Mary Lesic
(02) 9808 1199

Property Highlights |

- Renovated kitchen
- Defined living room | offset by glass doors that lead to an undercover balcony
- Two bedrooms with built-in robes
- Updated bathroom with separate shower & bath
- Internal laundry
- Lock-up garage



LEVEL 1

25/19-27 Adderton Road Telopea

