



208A/41-45 Belmore Street Ryde NSW

2 2 1

Located adjacent to the Parramatta River foreshore, this modern, 2-bedroom apartment enjoys comfortable strata living and is within walking distance of local public transport options including, bus, Rivercat and train. The Meadowbank Village Plaza and the recently completed Meadowbank Education Prescient are also easily accessible by foot or car.

**Price** : For Sale | \$740,000-\$760,000

**View** : <https://www.awardgroup.com.au/sale/nsw/northern-suburbs/ryde/residential/unit/7058999>

#### Property Highlights |

- Gourmet kitchen | complete with large stone island benchtop, under-mount double sink, gas stove and dishwasher
- Generous living room that yields direct access to balcony
- Ideal dining area that sits perfectly adjacent to the kitchen & living room
- Two well-proportioned bedrooms, both with balcony



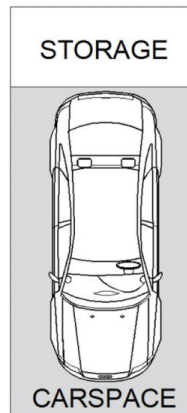
**Leighton Avery**  
(02) 9686 1155



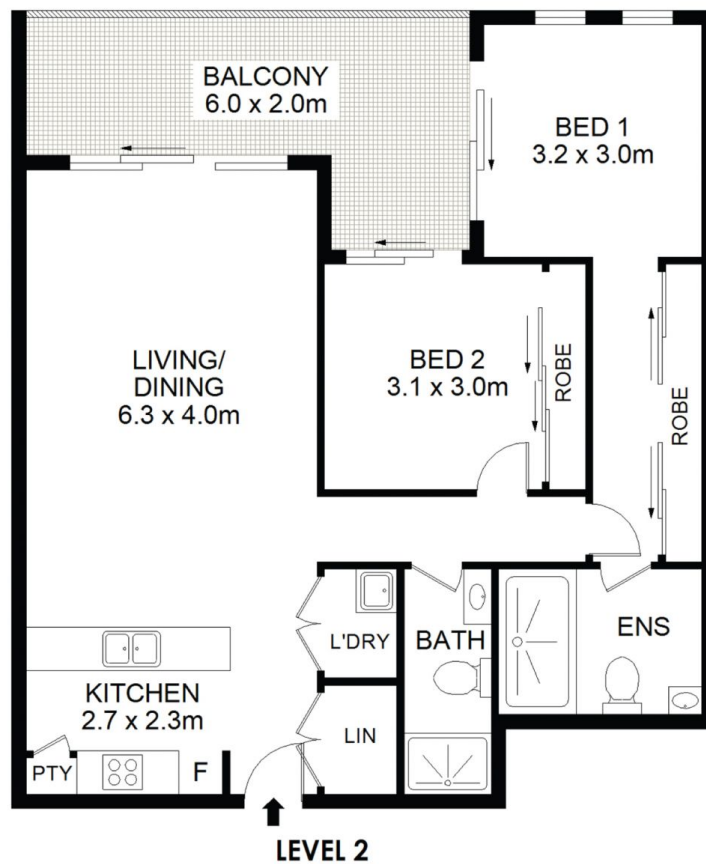
**David Johnson**  
(02) 9686 1155

# AwardGroup

Real Estate



## BASEMENT



A208/41-45 Belmore Street Ryde



DISCLAIMER: DIMENSIONS ARE APPROXIMATE AND SHOULD ONLY BE USED AS A GUIDE. THEY ARE NOT TO SCALE AND NO LIABILITY BE ACCEPTED.