

8/2-12 Busaco Road Marsfield NSW

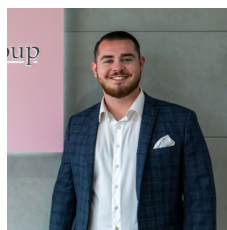
2 2 1

With its brick exterior, fresh interiors and private courtyard, this ready to occupy residence is a perfect opportunity to a broad market, perfect for the downsizer, investor or young family alike.

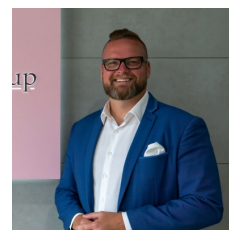
Bordering both Macquarie Park & Epping, nestled peacefully in a well-maintained complex, this private townhouse reveals generously scaled living capturing an optimum north-westerly aspect. It is a short 90-metre stroll across the road to the closest bus stop, 1.1km to Macquarie University Hospital, 1.8km to Macquarie University Metro Station and offers swift access to schools, Macquarie Centre, parks and main arterial roads including the M2.

Property Highlights |

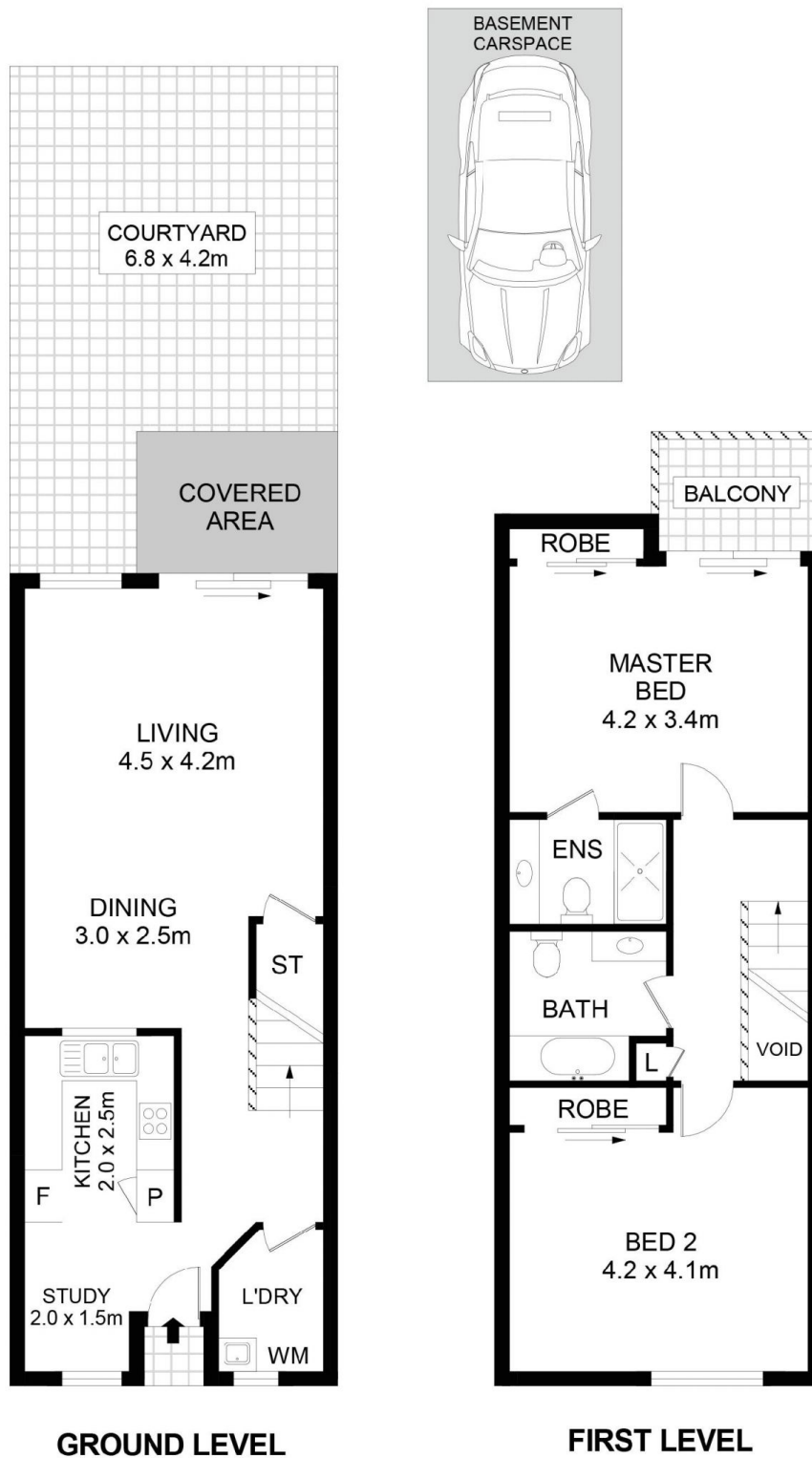
Price : \$ 838,500
Land Size : 156 sqm
View : <https://www.awardgroup.com.au/sale/nsw/northern-suburbs/marsfield/residential/townhouse/6250422>



Lochlan McDermott
(02) 9808 1199



David Johnson
(02) 9808 1199



8/2-12 Busaco Road Marsfield

