

1205C/41-45 Belmore Street Ryde NSW

3 2 2

Positioned on level 12, with a sun-lit north corner aspect, this luxurious three-bedroom apartment offers high-end finishes throughout and is set within a short stroll to popular riverside cycleways, Meadowbank Train Station, Ferry Wharf and Meadowbank Village Plaza.

Price : \$ 990,000

View : <https://www.awardgroup.com.au/sale/nsw/northern-suburbs/ryde/residential/apartment/6159746>

Property Highlights |

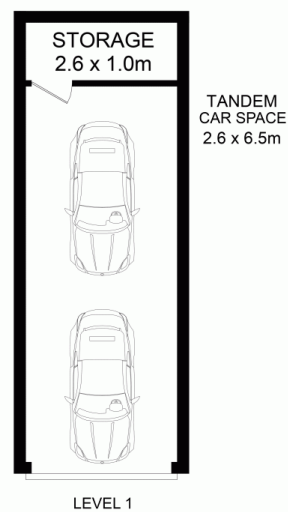
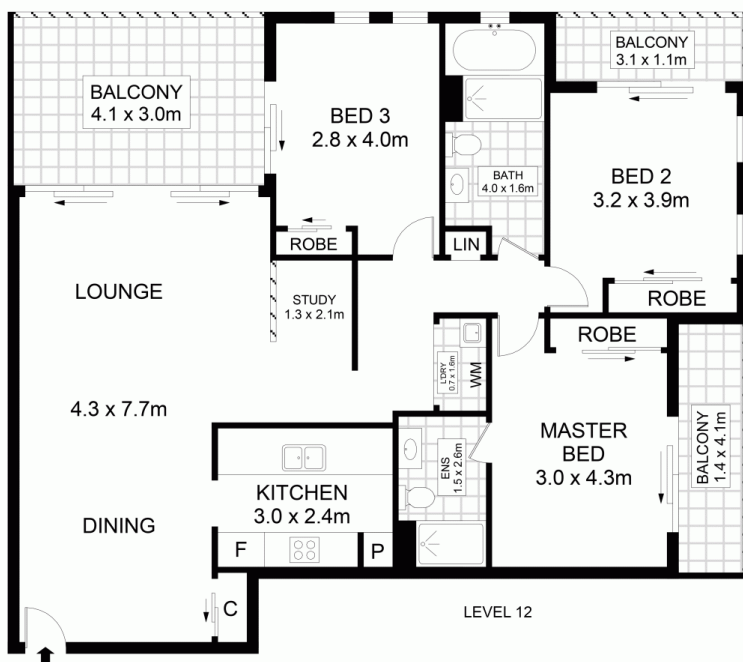
- Three well-proportioned bedrooms
- En-suite bathroom to main bedroom
- Kitchen with stone benchtops, stainless steel cooking appliances including dishwasher and mirrored glass splashback
- A perfectly positioned living room offsets the lounge, dining and kitchen | yields seamless flow to outdoor entertaining
- The family bathroom showcases an oversized shower



David Johnson
(02) 9686 1155



Leighton Avery
(02) 9686 1155



1205C/41-45 Belmore Street, Ryde



Disclaimer
Floor Plan measurements are approximate and are for illustrative purposes only. While we cannot doubt the floor plans accuracy, we make no guarantee, warranty or representation as to the accuracy and completeness of the floor plan

AwardGroup
Real Estate