



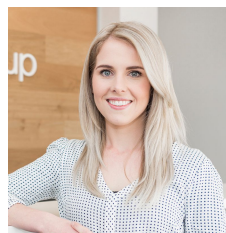
9/12 Meadow Crescent Meadowbank NSW

2 1 1

note: PLEASE ENSURE YOU HAVE A QR SCAN APP ON YOUR PHONE BEFORE YOU ATTEND

Enjoying not only a short walk to Meadowbank train station, Ferry wharf and Village Plaza, this tastefully renovated unit encompasses the tranquillity that the tree top views of Memorial park and Meadowbank reserve have to offer. A combination of North and South facing windows ensures all rooms are consistently light filled and airy all year-round. Along with modern features and well-proportioned living spaces, you'll find no better place to call home than this solid double-brick unit.

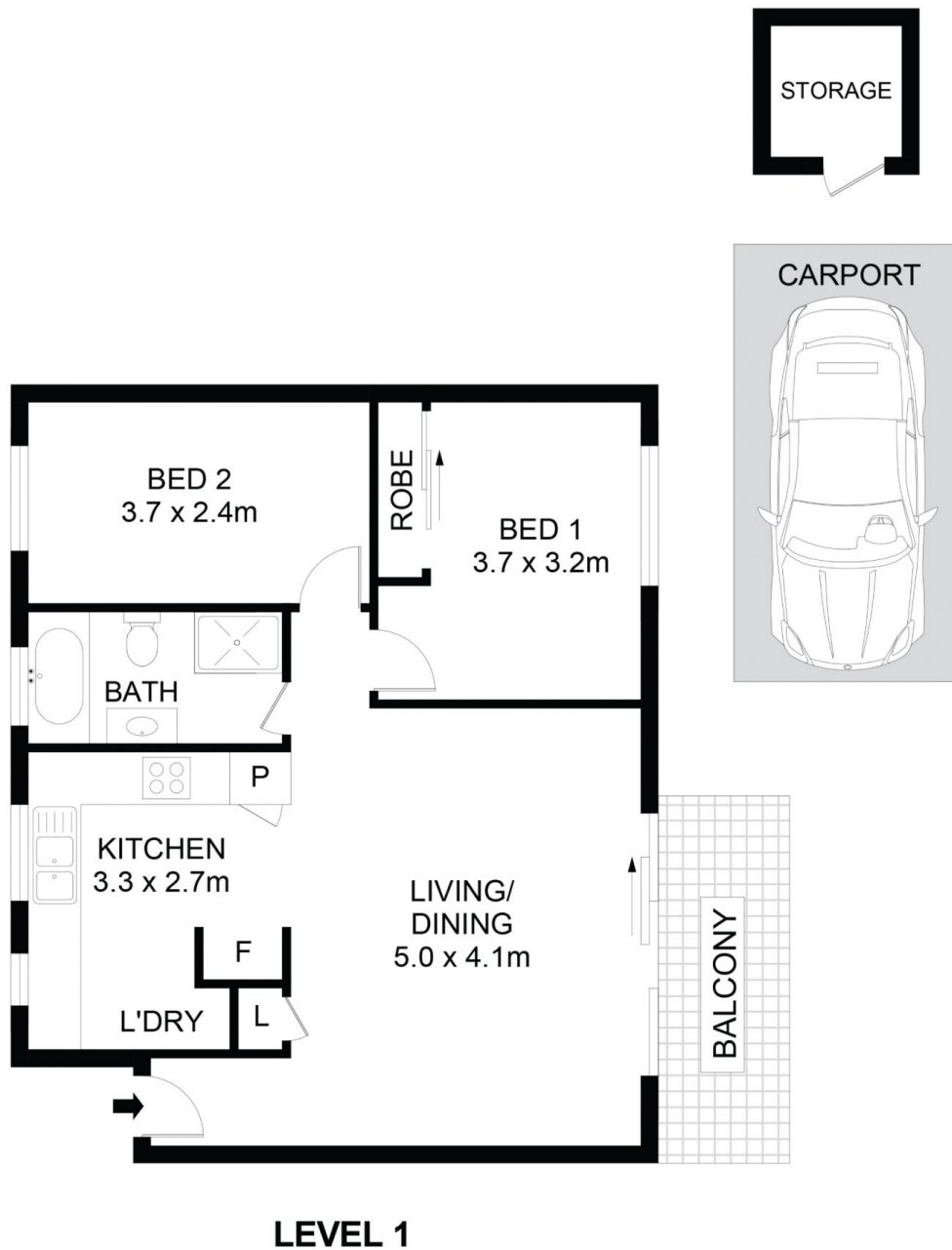
View : <https://www.awardgroup.com.au/lease/nsw/north-ern-suburbs/meadowbank/residential/unit/6032074>



Melissa Johnson
(02) 9808 1199

Property Highlights:

- Brand new, gourmet kitchen with ceramic cooktop,



9/12 Meadow Crescent Meadowbank

