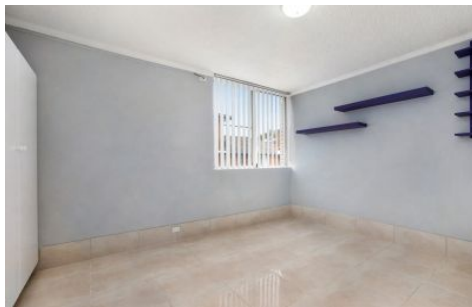




AwardGroup
REAL ESTATE



17/3-5 Meadow Crescent Meadowbank NSW

2 1 1

Ideally located opposite Memorial Park, this fully renovate 2-bedroom unit offers bright and airy interiors and a huge lock up garage.

Within a short stroll of Meadowbank Train Station, Ferry Wharf and riverside cycleways this will be a great place to call home.

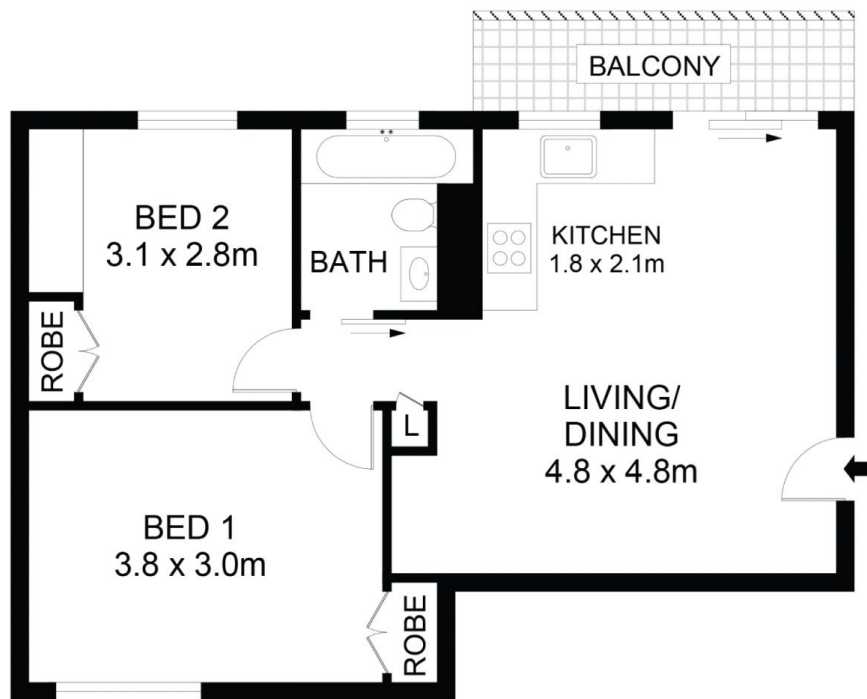
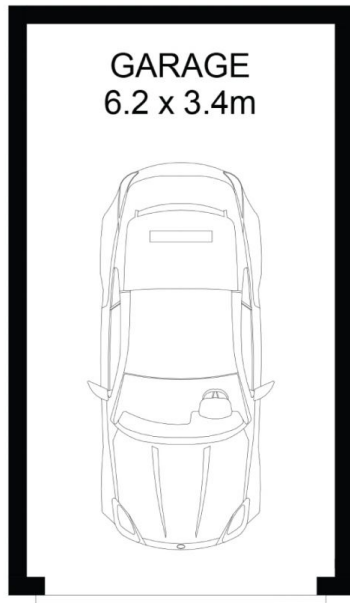
Property Highlights |

- 2 bedrooms, both with built in storage options
- Modern kitchen with stone benchtops and washing machine space
- Renovated bathroom
- Combined living room offset by spacious balcony
- Tiled throughout with clean and tidy paintwork
- Huge 23sqm garage
- Neat and tidy complex with onsite visitor parking

View : <https://www.awardgroup.com.au/lease/nsw/north-ern-suburbs/meadowbank/residential/unit/5782378>



Melissa Johnson
(02) 9808 1199



LEVEL 2

17/3-5 Meadow Crescent Meadowbank



DISCLAIMER

DIMENSIONS ARE APPROXIMATE AND SHOULD ONLY BE USED AS A GUIDE
THEY ARE NOT TO SCALE AND NO LIABILITY WILL BE ACCEPTED

AwardGroup
Real Estate