



26/947 Victoria Road West Ryde NSW

2 2 1

? Very spacious unit with a practical floorplan that allows for privacy.

? Large combined lounge and dining room opens to a huge balcony which is ideal for entertaining and has wonderful district views.

? Open-plan kitchen with gas cooktop, rolled edge benches, servery and plenty of cupboard and bench space.

? Both bedrooms are very large, have built-in robes and open to the balcony, they also have another window for cross flow ventilation as well as balcony door.

? The main bedroom has a large en-suite.

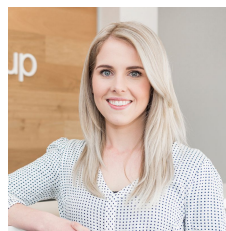
? Family sized bathroom with separate shower and bath. Internal laundry.

? Inclusions: screens on doors and windows. Air conditioner and gas bayonet in the lounge room.

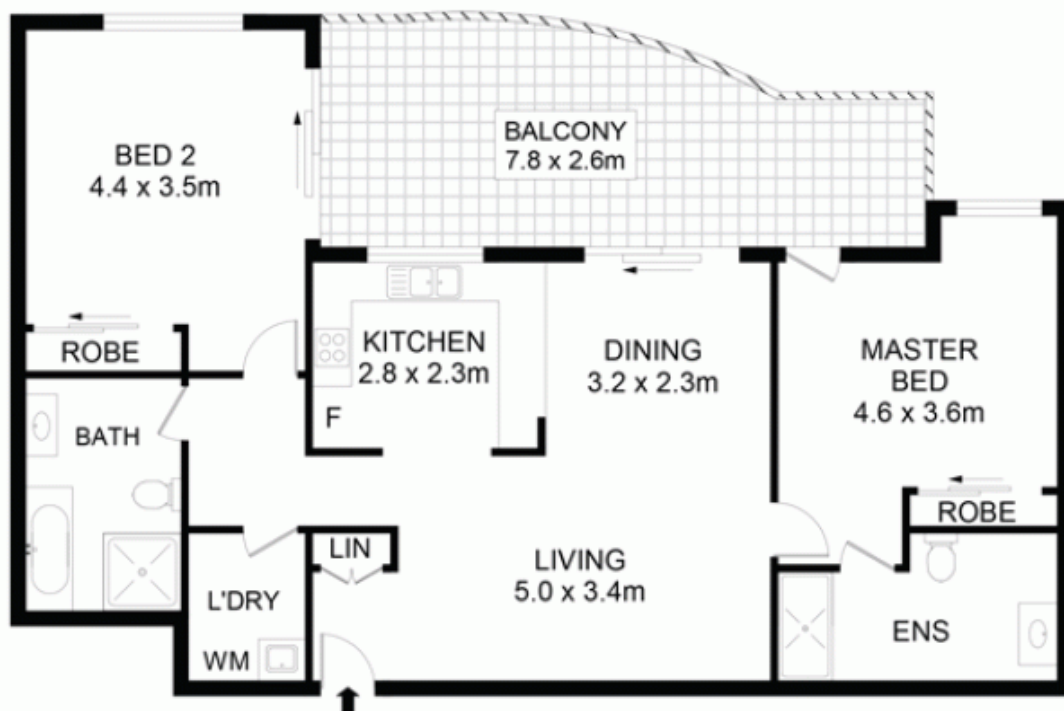
? Lift.

? Secure car space.

View : <https://www.awardgroup.com.au/lease/nsw/north-ern-suburbs/west-ryde/residential/apartment/5719181>



Melissa Johnson
(02) 9808 1199



LEVEL 3

26/947-949 Victoria Road West Ryde



DISCLAIMER: DIMENSIONS ARE APPROXIMATE AND SHOULD ONLY BE USED AS A GUIDE. THEY ARE NOT TO SCALE AND NO LIABILITY BE ACCEPTED.