



**48 Winbourne Street West Ryde NSW**

4  2  2 

Conveniently set to the border of both Eastwood and Denistone, this townhouse boasts ease of access to multiple transport options, schools, parks, shops and the Sydney & Parramatta CBD's.

**Price** : \$ 1,480,000

**View** : <https://www.awardgroup.com.au/sale/nsw/northern-suburbs/west-ryde/residential/townhouse/5641369>

Graced with a sublime sense of grandeur, this two-storey townhouse has been designed to deliver an effortless family lifestyle for its occupants. Showcasing sun-soaked interiors with an abundance of natural light in a small boutique complex, you are sure to sit up and take note.

Property Highlights |

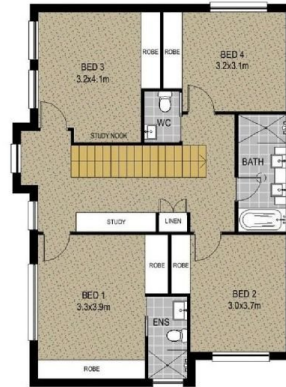
- Flexible floorplan yielding beautifully appointments throughout
- Generous family living with seamless flow via bi-fold doors out to hardwood decking



**David Johnson**  
(02) 9808 1199



**Leighton Avery**  
(02) 9808 1199



Ground Floor Internal : 71sqm  
 First Floor Internal : 90sqm  
 Garage : 32sqm

## 48 Winbourne Street, West Ryde NSW 2114

### Disclaimer

Floor Plan measurements are approximate and are for illustrative purposes only. While we cannot doubt the floor plans accuracy, we make no guarantee, warranty or representation as to the accuracy and completeness of the floor plan.

**AwardGroup**  
 Real Estate