



D1003/41-45 Belmore Street Ryde NSW

2 2 1

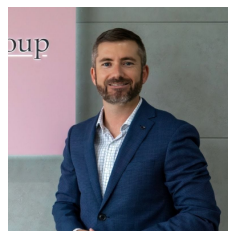
Positioned with a south-easterly aspect and views out to the Parramatta River, this tastefully appointed apartment is set within a short stroll to popular riverside cycleways, Meadowbank Train Station, Ferry Wharf and Meadowbank Village Plaza.

Price : \$ 850,000

View : <https://www.awardgroup.com.au/sale/nsw/northern-suburbs/ryde/residential/apartment/5351855>

Property Highlights |

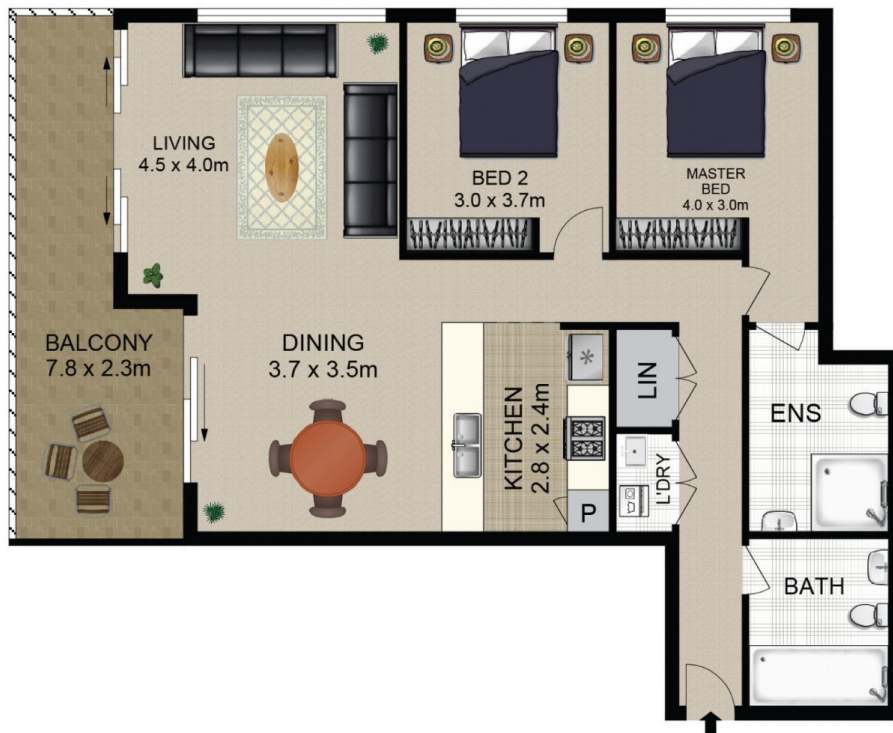
- Two bedrooms | both with built-in wardrobes and en-suite bathroom to main
- Kitchen with stone bench tops, stainless steel cooking appliances including dishwasher and mirrored glass splashback
- A perfectly positioned living room offsets the lounge, dining and kitchen | yields seamless access to the East-facing balcony
- The family bathroom showcases shower recess and



Leighton Avery
(02) 9808 1199



David Johnson
(02) 9808 1199



LEVEL 10

D1003/41-45 Belmore Street Ryde



DISCLAIMER

DIMENSIONS ARE APPROXIMATE AND SHOULD ONLY BE USED AS A GUIDE
THEY ARE NOT TO SCALE AND NO LIABILITY WILL BE ACCEPTED

AwardGroup
Real Estate