



E306/2 Latham Terrace Newington NSW

2 2 1

Surrounded by quality 'low-rise' residences in an enviable position to the heart of the convenient Newington Village, living at this address will prove a breeze with a short stroll to shops, cafes, restaurants, parks, public transport options and of course the famous ANZ stadium.

With an abundance of living space and luxurious appointments throughout, this property lends itself to those who are looking to simply pack their bags and move in! Serviced by 2 generous bedrooms, 2 bathrooms and a modern kitchen, apartment E306/2 Latham Terrace is sure to tick all the boxes.

Property Features |

- Two-bedrooms with built-in wardrobes
- Laminate flooring throughout the living areas

Price : \$ 670,000

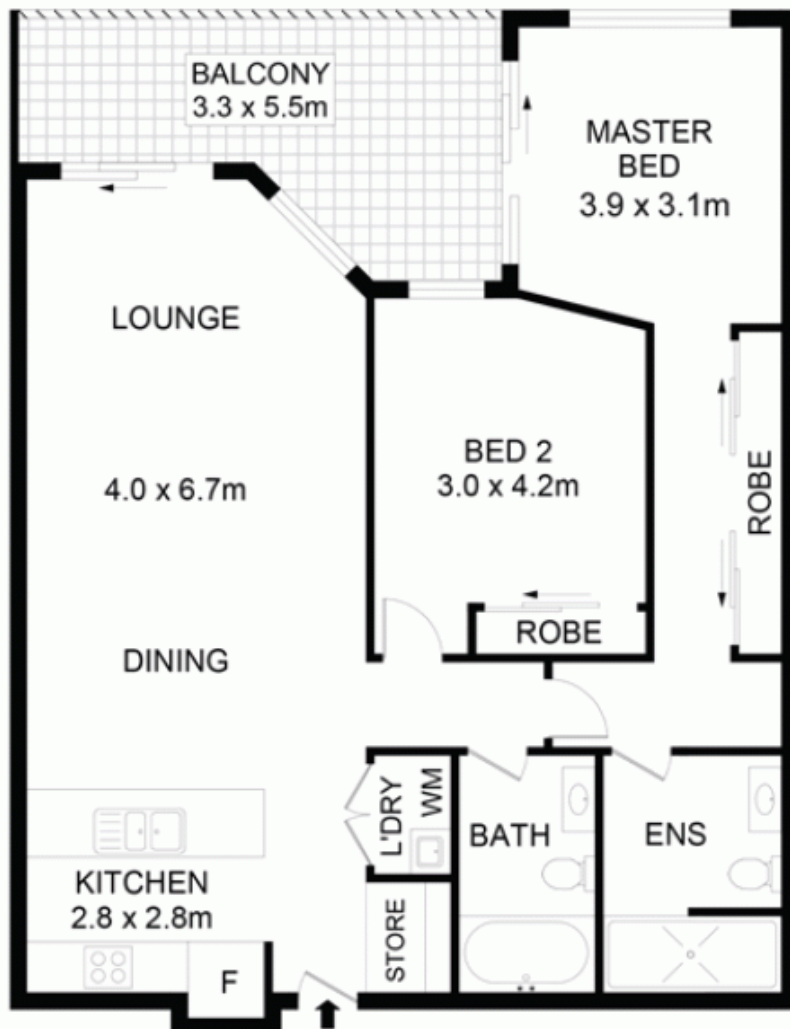
View : <https://www.awardgroup.com.au/sale/nsw/inner-west/newington/residential/unit/5244801>



David Johnson
(02) 9808 1199



Leighton Avery
(02) 9808 1199



LEVEL 3



E306/2 Latham Terrace Newington



DISCLAIMER

DIMENSIONS ARE APPROXIMATE AND SHOULD ONLY BE USED AS A GUIDE
THEY ARE NOT TO SCALE AND NO LIABILITY WILL BE ACCEPTED

AwardGroup
Real Estate