



501F/41-45 Belmore Street Ryde NSW

3 2 2

Offering spacious and well thought out interiors, this modern 3-bedroom apartment offers a luxurious riverside lifestyle and is positioned high amongst the treetops with water backdrop

Price : \$ 985,000

View : <https://www.awardgroup.com.au/sale/nsw/northern-suburbs/ryde/residential/apartment/5230692>

Located within moments' walk of the river foreshore and cycleways, living in this property presents an outstanding opportunity to enjoy all the modern amenities of a near new building in a highly sought-after location that falls in close proximity of Meadowbank Train Station and Ferry Wharf, with Top Ryde shopping centre only a 5-minute drive or bus ride up the road?



Leighton Avery
(02) 9808 1199



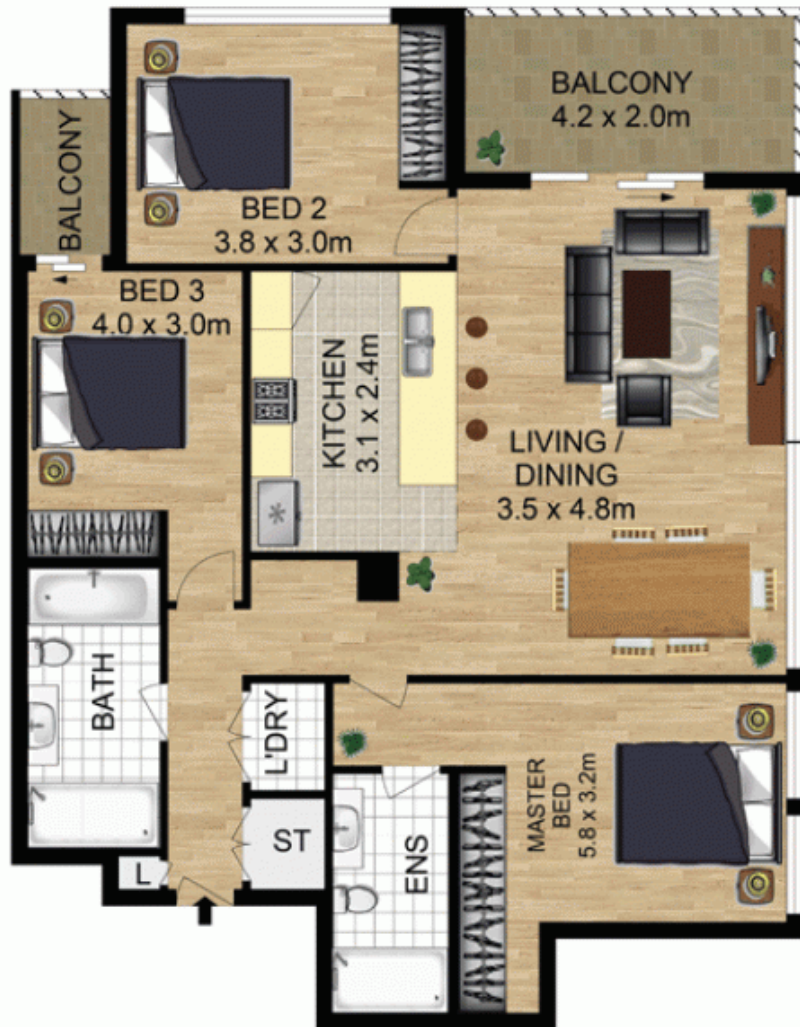
David Johnson
(02) 9808 1199

Property Highlights |

- Gourmet-style kitchen with stone island benchtop, quality AEG stainless steel cooking appliances including



LEVEL 1



LEVEL 5

501F/41-45 Belmore Street Ryde



DISCLAIMER

DIMENSIONS ARE APPROXIMATE AND SHOULD ONLY BE USED AS A GUIDE
THEY ARE NOT TO SCALE AND NO LIABILITY WILL BE ACCEPTED

AwardGroup
Real Estate