

3203/90 Belmore Street Ryde NSW

3 2 2

Embracing a convenient and easy-care lifestyle, this generously proportioned apartment presents a blend of modern and low maintenance living sprawled across a spacious, flexible floor plan. Set securely in a well-maintained complex, it's conveniently located on the border of Ryde and Meadowbank just moments from the river's edge, parks, train, bus and rivercat transport.

It's tall ceilings and full brick structure provide a solid foundation for those looking for a place to call home? Do yourself a favour and join us at an upcoming inspection!

Property Highlights |

- Large open plan living
- Flowing interiors with a flexible layout
- Seamless access to undercover entertainers' balcony

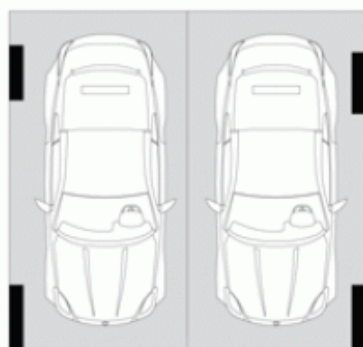
View : <https://www.awardgroup.com.au/sale/nsw/northern-suburbs/ryde/residential/unit/5230683>



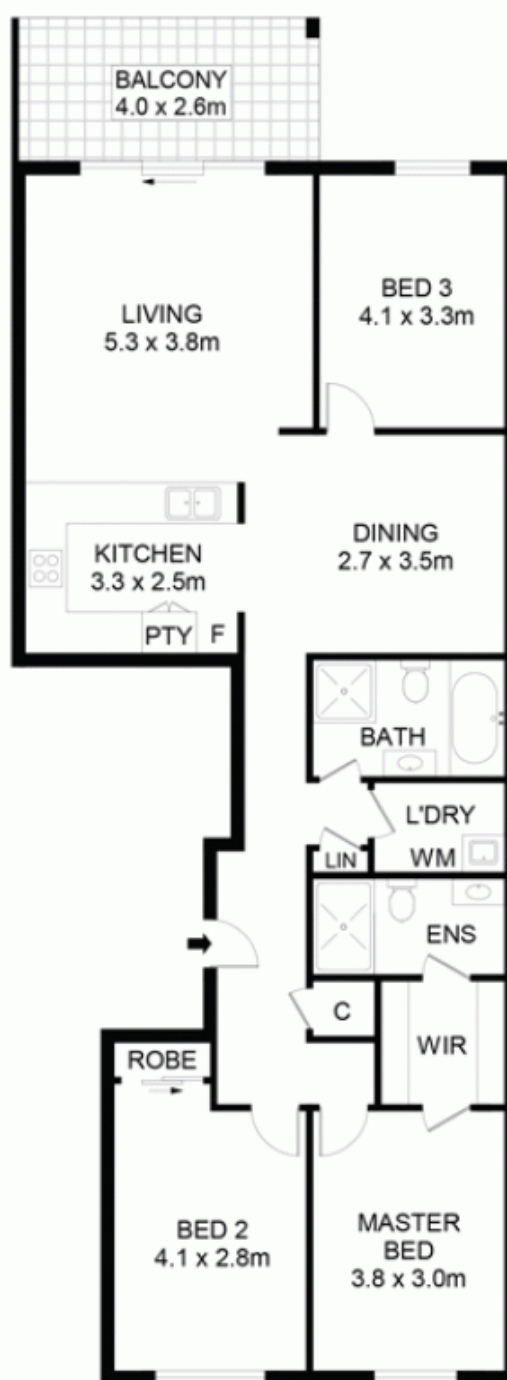
David Johnson
(02) 9808 1199



Leighton Avery
(02) 9808 1199



BASEMENT 3



LEVEL 1

3203/90 Belmore Street Ryde



DISCLAIMER

DIMENSIONS ARE APPROXIMATE AND SHOULD ONLY BE USED AS A GUIDE
THEY ARE NOT TO SCALE AND NO LIABILITY WILL BE ACCEPTED

AwardGroup
Real Estate