

11/3-5 Meadow Crescent Meadowbank NSW

1 1 1

Quietly positioned, this first floor 1- bedroom unit is well presented, is located directly opposite Memorial Park and is within a short stroll of Meadowbank Ferry Wharf and Train Station.

Price : \$ 395,000
Land Size : 40.5 sqm
View : <https://www.awardgroup.com.au/sale/nsw/northern-suburbs/meadowbank/residential/unit/5230617>

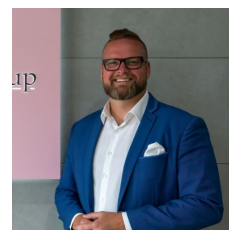
Property Highlights |

- Bedroom with built-in wardrobe
- Bathroom with space for internal washing machine
- Combined living area | offset by an east facing glass door and balcony
- Kitchen with freestanding electric stove and oven
- Neutral paintwork and laminate floorboards
- Linen storage upon entry
- On-title parking

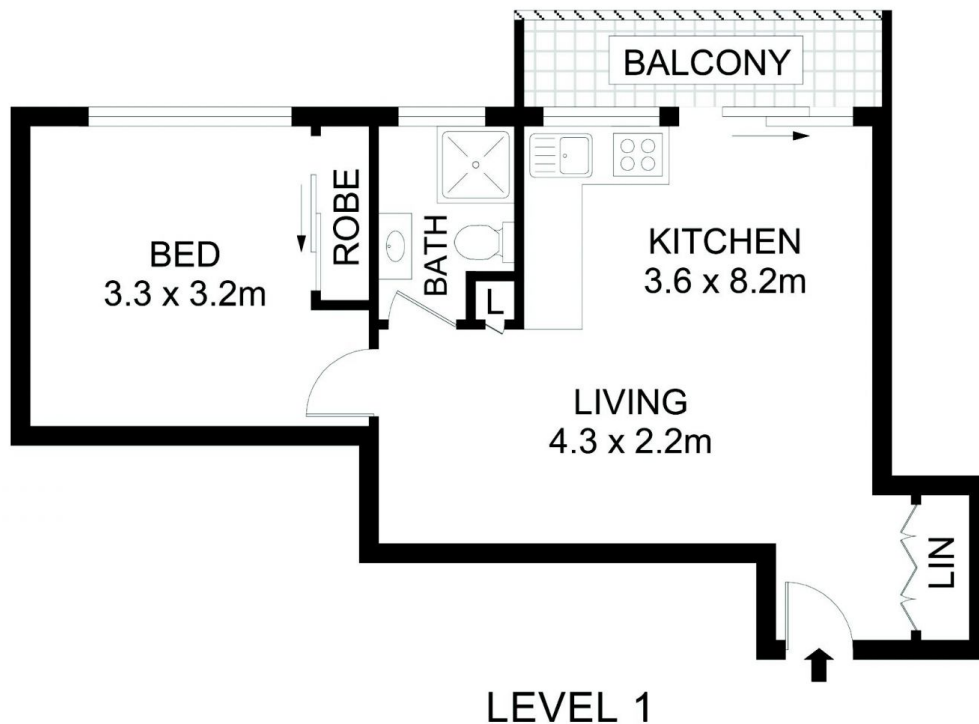
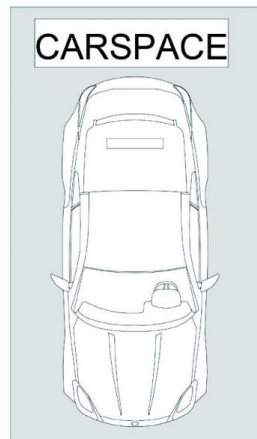
Location Highlights |



Leighton Avery
(02) 9808 1199



David Johnson
(02) 9808 1199



11/3-5 Meadow Crescent Meadowbank

DISCLAIMER

DIMENSIONS ARE APPROXIMATE AND SHOULD ONLY BE USED AS A GUIDE
THEY ARE NOT TO SCALE AND NO LIABILITY WILL BE ACCEPTED

AwardGroup
Real Estate