



1/12 Johnson Avenue Melrose Park NSW

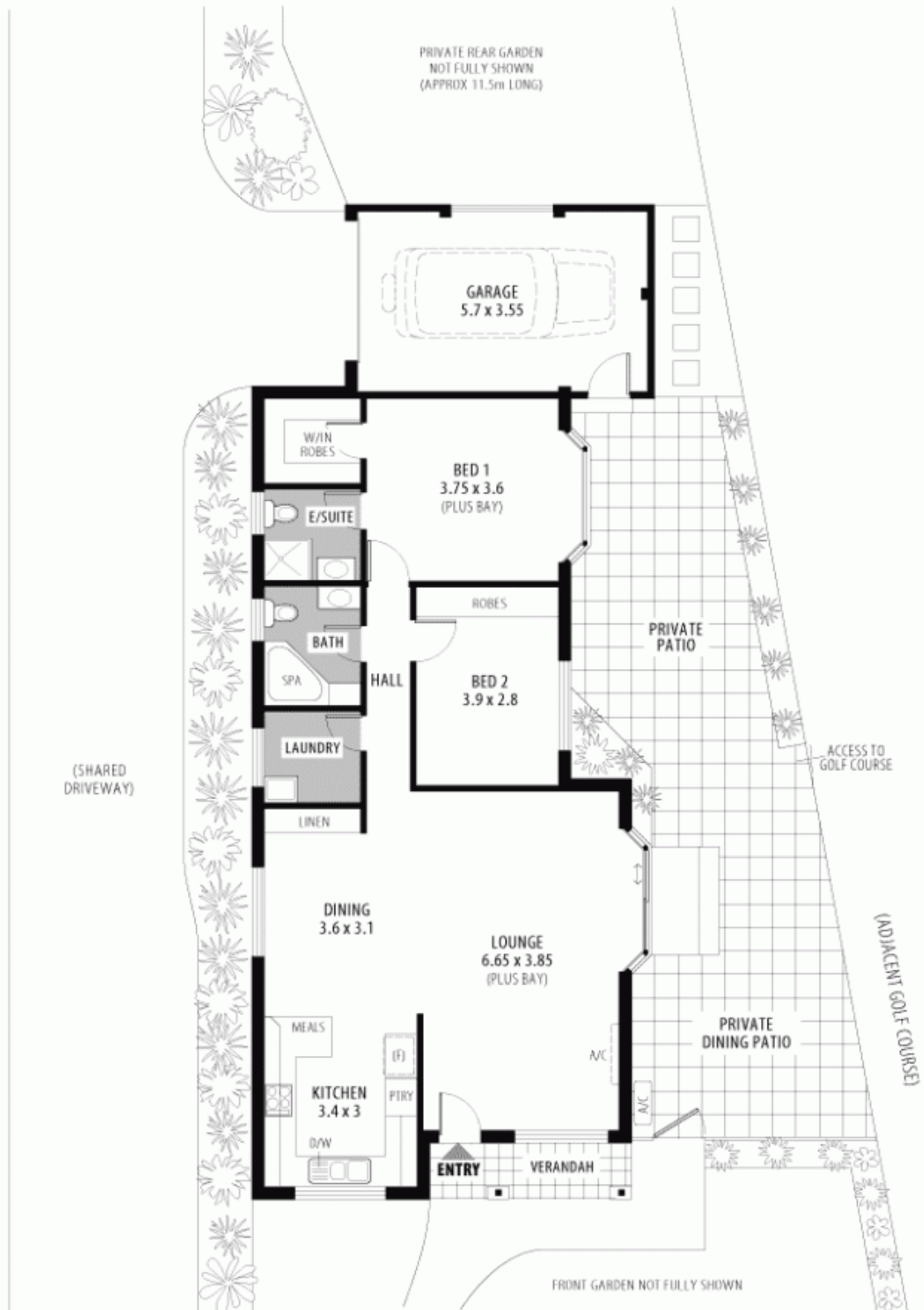
2 2 1

Peacefully set at the end of a small (dead-end) street, this stand-alone brick veneer villa boasts lifestyle and a direct outlook over the golf course. It is conveniently positioned to shops, cafes, schools, parks, cycle way, bus, train and rivercat transport.

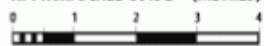
Price : \$ 740,000
View : <https://www.awardgroup.com.au/sale/nsw/northern-suburbs/melrose-park/residential/villa/5230031>

Features Include:

- * Two bedrooms, main with en-suite bathroom and a walk-in robe
- * Open plan living and dining area bathed in natural light
- * Stylishly finished kitchen with gas cooking, stainless steel appliances and breakfast bar
- * Reverse cycle air conditioning and alarm system
- * Extremely low maintenance villa with a secure grassy rear yard for the kids and an ample outdoor entertaining area that looks directly over the impeccably maintained



APPROX. SCALE GUIDE - (METRES)



PLEASE NOTE:

All dimensions are approximate, and any boundaries shown are approximate indications only. These floor plans are provided to show the layout for marketing purposes only, and must not be relied upon for any other purpose. No liability will be accepted.