



**6 Timberline Avenue WEST PENNANT HILLS NSW**

4 2 2

Bordering Beecroft and Carlingford, this immaculate single level residence has been designed to deliver an effortless family lifestyle. With a selection of formal and informal living areas and well thought out in/outdoor entertainment options, it is a home of privacy set close to all amenities.

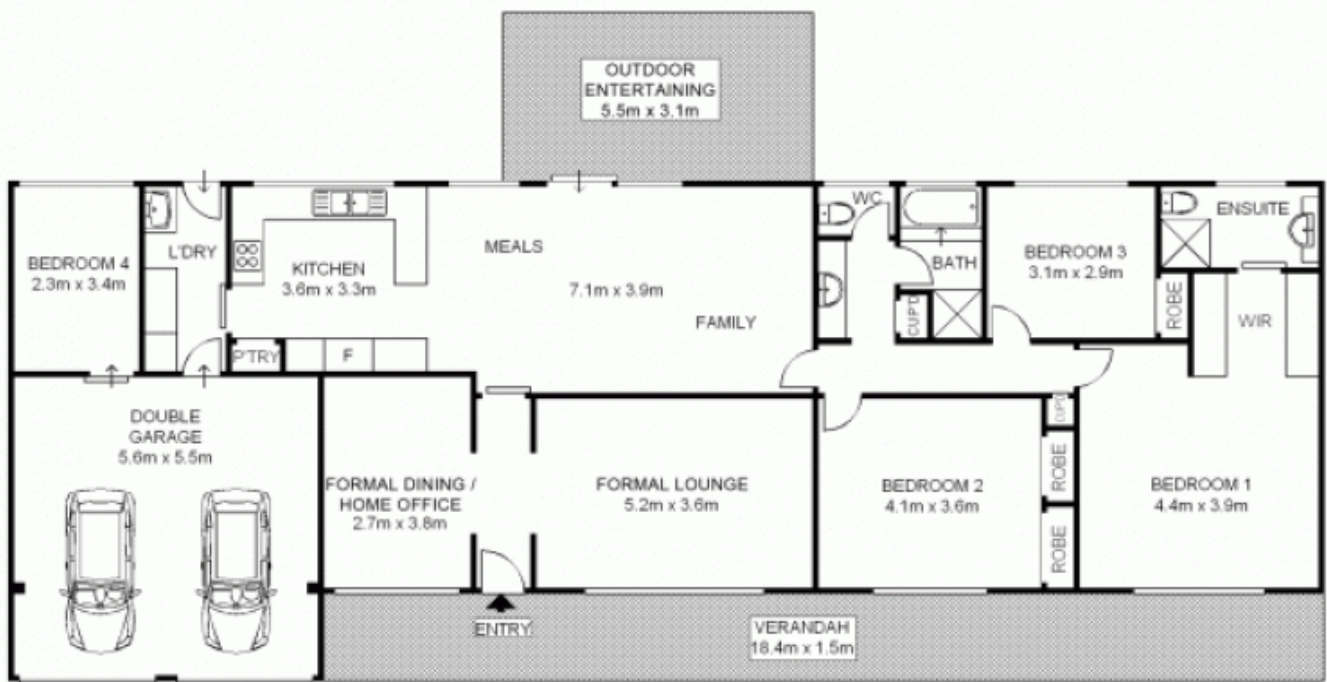
**View** : <https://www.awardgroup.com.au/sale/nsw/hills/west-pennant-hills/residential/house/5229975>

**Features include:**

- \* generous layout with modern easy-care finishes
- \* flowing interiors with large stylish air-conditioned family living and dining
- \* tastefully finished kitchen with dishwasher and glass splashback
- \* separate formal lounge and formal dining/home office or study
- \* secluded master bedroom with a near new en-suite bathroom, generous walk through robe and a private leafy outlook



**David Johnson**  
**(02) 9808 1199**



Scale shown in metres. All dimensions herein are approximate and gathered from sources believed to be reliable. Whilst every effort is made for the accuracy of our floor plans, interested parties should rely on their own enquires. Floor Plans by Industrie Media. [www.industriemedia.com.au](http://www.industriemedia.com.au)

S3

6 Timberline Avenue, West Pennant Hills


**Award Group**  
 Real Estate