

3 Imlay Avenue CARLINGFORD NSW

4 3 2

Nestled in a peaceful family friendly street within walking distance to Murray Farm Primary School, Westfield shopping (North Rocks), Murray Farm Reserve and Darling Mills State Forest this immaculately presented & maintained family home features:

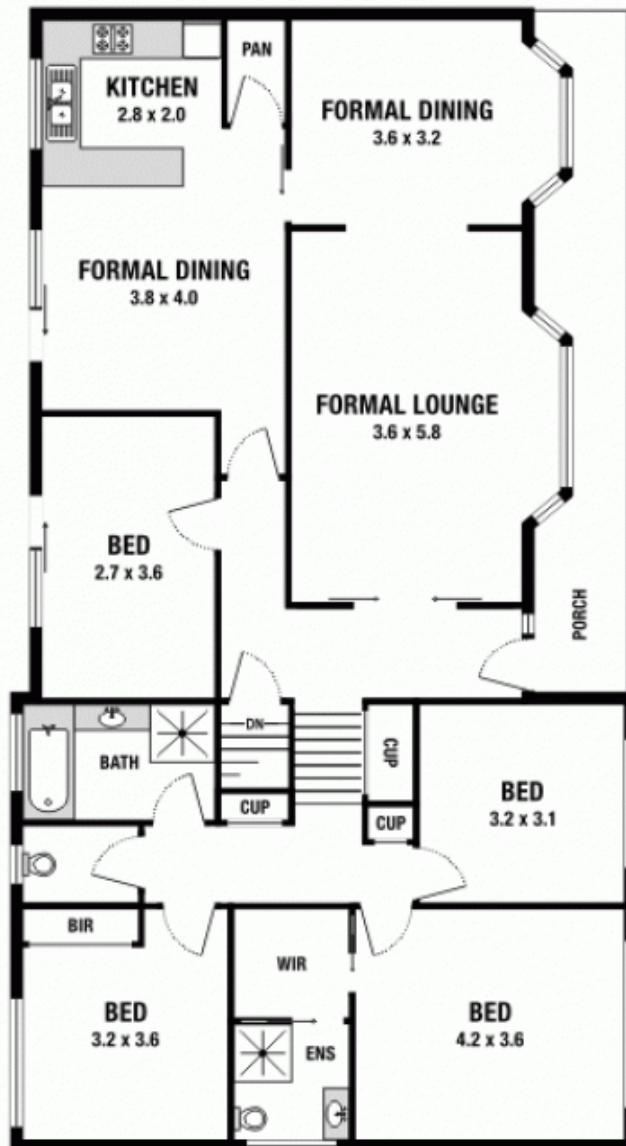
- * 4 double bedrooms (3 with built in robes)
- * En-suite bathroom & walk-in robe to main
- * Formal lounge with bay window & separate dining
- * Landscaped front and rear gardens
- * Large main bathroom with separate shower & bath
- * Ducted reverse cycle air conditioning
- * Well maintained eat in kitchen with breakfast bar leading out to a built in BBQ entertaining area
- * In ground pool
- * Separate rumpus/family room
- * Internal access to the huge double (auto) garage with

View : <https://www.awardgroup.com.au/sale/nsw/northern-suburbs/carlingford/residential/house/5229905>

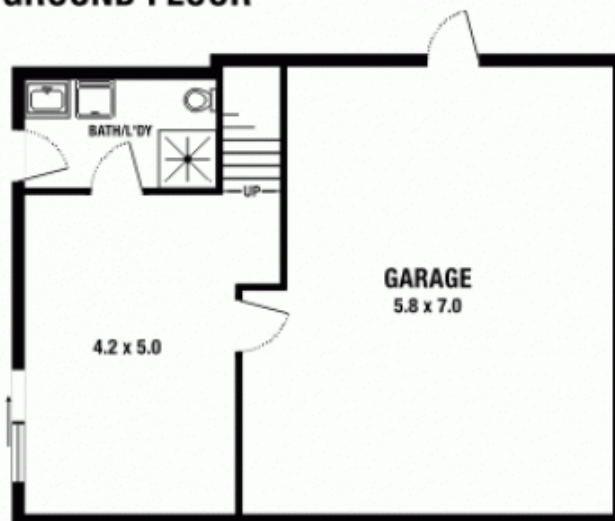


David Johnson
(02) 9808 1199

3 Imlay Avenue, Carlingford



GROUND FLOOR



LOWER FLOOR



Please note: All stated dimensions are approximate only. Particulars given are for general information only and do not constitute any representation on the part of the vendor or agent.