



**AwardGroup**  
REAL ESTATE

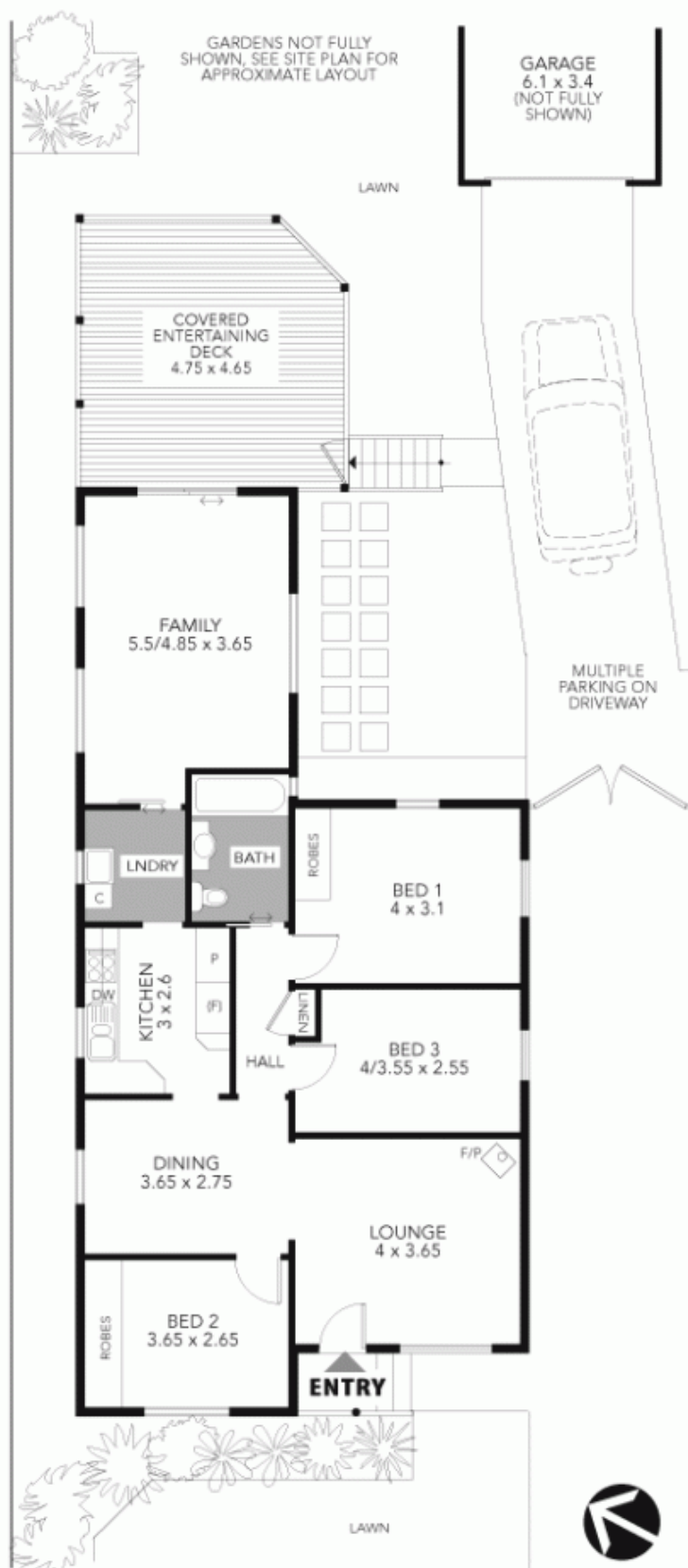


### 27 Boyle Street ERMINGTON NSW

3 1 1

Situated just a couple of doors up from George Kendall riverside parklands, this beautifully renovated 3 bedroom family home awaits your inspection. Polished timber floors throughout. Large separate formal dining room and separate living room with slow combustion fireplace. Modern kitchen and bathroom. Sunny family/rumpus room leads through sliding glass doors to a beautiful kid and dog friendly fenced and covered timber deck, which overlooks the fully fenced and landscaped backyard. Reverse Cycle Air Conditioning. The side driveway allows plenty of off street parking as well as vehicle access to the backyard and to the lock up garage. Quiet handy location. Walk to schools, shopping centre and transport. The stop for L20 government bus to the City and Parramatta is also within easy walking distance.

**View :** <https://www.awardgroup.com.au/sale/nsw/parramatta/ermington/residential/house/5229743>



## Ermington

### 27 Boyle Street

APPROXIMATE SCALE GUIDE (METRES)



PLEASE NOTE: All dimensions are approximate, and any boundaries shown are approximate indications only. These floor plans are provided to show the layout for marketing purposes only, and must not be relied upon for any other purpose. No liability will be accepted.